

Standard Features

EXTERIOR

- Award winning, classic architecture
- 30 Year architectural shingles
- Upgraded exterior light fixtures
- Maintenance free aluminum soffit and fascia
- Full rain gutters with downspouts
- 8' and 9' garage doors with keyless entry
- 12'x12' Patio (per plan)
- Shutters (per plan)
- Stone, brick, and stucco exterior finishes
- All landscaping included
- Enticing timber entry
- Solid wood entry doors
- Carriage style garage doors

INTERIOR

- Custom architectural elements
- Generous flooring allowances
- Hardwood/Stone floors
- Three tone paint
- Rounded corners
- 10 ft. ceilings on main floor
- Vaulted ceilings (per plan)
- 8 ft. solid wood doors
- Upscale lighting package
- Pre-cast family room fireplace
- Oil rubbed bronzed/satin nickel hardware
- Wood window casings
- Category 5 wiring in every room
- Laundry room with built in cabinets
- Full security system installed
- Smoke detectors in all living areas
- 8" baseboards and 4" casing

- Wall texture
- Optional wet bar
- Central vacuum

GOURMET KITCHENS

- Custom cabinetry & under cabinet lighting
- Granite countertops w/stone backsplash
- Drawer microwave
- Double stainless ovens included
- 5 burner gas cooktop with custom hood
- 48" opening for refrigerator

LUXURIOUS MASTER SUITES

- Custom cabinetry
- Elongated toilets
- Granite counter and tile tub surround
- 36" high vanity
- Dual sinks with custom faucets
- Glass block shower (as per plan)
- Jetted tub
- Walk-in closet
- Pre-built closet organizer

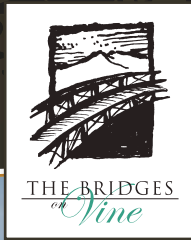
ENERGY EFFICIENCY

- R38 insulation in attic
- R13 insulation in walls
- 90% efficient furnace
- Central air conditioning
- 2 - 40 Gallon water heaters
- Natural gas furnace
- Programmable thermostats
- Energy efficient windows
- Finished and painted garage


www.highercaliber.com



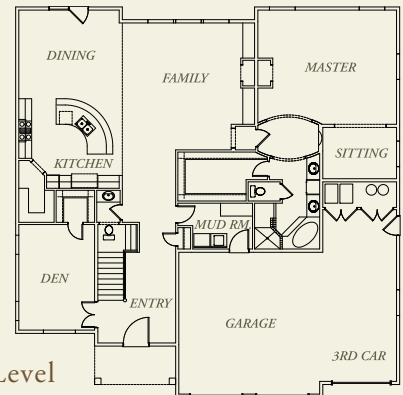
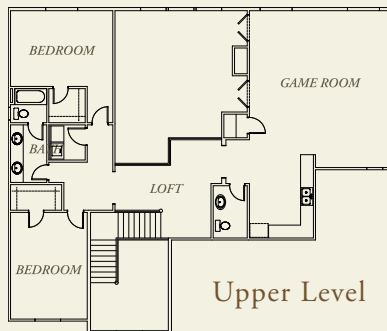
MARKETED BY
IDC REAL ESTATE GROUP



The Astoria

Total—4538 Ft.²
Main Level—2612 Ft.²
Upper Level—1926 Ft.²

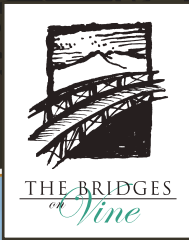
- 3 Bedrooms + Den
- 2 Full Baths
- 2 Half Baths
- Game Room



Caliber
www.highercaliber.com



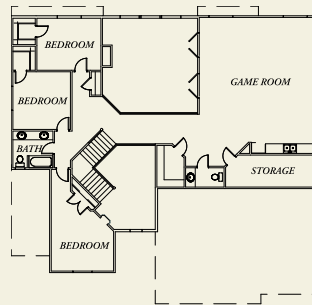
MARKETED BY
 IDC REAL ESTATE GROUP



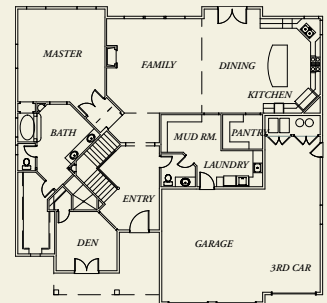
The Toy

Total—4194 Ft.²
Main Level—2474 Ft.²
Upper Level—1720 Ft.²

- 4 Bedrooms + Den
- 2 Full Baths
- 2 Half Baths
- Game Room



Upper Level

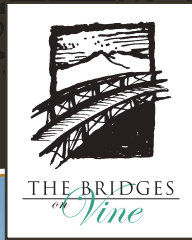


Main Level

Caliber
www.highercaliber.com



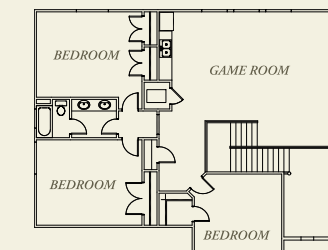
MARKETED BY
 IDC REAL ESTATE GROUP



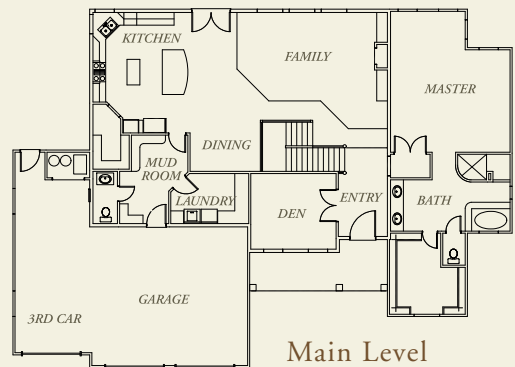
The Wisteria

Total-3930 Ft.²
Main Level-2458 Ft.²
Upper Level-1472 Ft.²

- 4 Bedrooms + Den
- 2 Full Baths
- 1 Half Bath
- Game Room



Upper Level



Main Level

Caliber
www.highercaliber.com



MARKETED BY
 IDC REAL ESTATE GROUP